



Manage Your Top Line, Bottom Line, and Everything in Between

NetSuite Project Management



Manage your services organisation more effectively with integrated project management, project tracking, and reporting with NetSuite Project Management. You can automate project creation when specific services are sold and automatically track percent complete, time budgeted, and time spent on project tasks. Reports for utilisation and backlog help analyse employee workloads and efficiency.

Key Benefits

- Improve oversight of your operations, maintain tighter control of project accounting.
- Understand the true costs of the services you render, and get an accurate and detailed view of profitability.
- Improve productivity and drive efficiencies.

Why NetSuite Project Management?

Project accounting is a key component in monitoring the progress of your projects and ensuring that your business remains profitable. NetSuite Project Management is essential to organise work and allow visibility into a complex operation.

NetSuite's Project Management module seamlessly integrates with the NetSuite accounting system. In addition to project management and time and expense tracking, you can create and issue invoices and compare project performance to budgets and other metrics. NetSuite Project Management module manages revenue recognition, expenses, unbilled balances, and other project-related financials.

Key Capabilities

Manage Multiple Project Types

NetSuite manages multiple types of projects including time and materials and fixed price projects.

Automate Job Creation

You can automate job creation by identifying service items that will require a job; then, sales orders for those items go into a queue where you can assign ID and project manager, and bulk create many jobs with one click.

Organise Tasks and Activities

NetSuite also organises tasks, calls, and events, linking them to specific projects. Information regarding clients is managed in one place so resource tracking is complete and real-time for ever improving client service, and can be segmented and leveraged for smarter client intelligence.

Project Tasks

You can create project tasks with multiple predecessors and finish-to-start (FS), start-to-start (SS), finish-to-finish (FF), and start-to-finish (SF) relationships. In addition, project tasks can be created with lag time between tasks and a finish no later than (FNLT) constraint.

Project Dashboard

The Project Dashboard gives project managers a visual, graphical analysis of the status of specific projects. Project managers can see important key performance indicators (KPIs) at a glance such as which projects are on time, under budget, and destined for success. For projects that are behind, you can use the dashboard to quickly drill down and identify the root cause. As team members enter information, the dashboard updates automatically to provide you with an up-to-date view of the current health of your projects, while it's happening.

Project Centre

With Project Management, you can assign project resources a standard consultant role with access to the Project Centre. It provides a convenient way for consultants and project managers to view summary information about their projects and quickly enter transactions against those projects.

Project-Based Milestones

Project milestones are critical points that you monitor throughout the life cycle of a project. Milestones highlight important interim events, such as the completion of a phase, delivery of materials, and payment for work performed. These milestones are useful, for example, in setting dates for billing and completeness of work.

Project Templates

Project Templates are reusable templates that provide robust starting points for your projects, saving time, and simplifying projects from beginning to end.

Project P&L Tab

With the Project P&L Tab, you can now track the progress and monitor costs associated with each project, keeping you on top of financial performance.

Estimate Labour and Revenue

NetSuite estimates labour cost and revenue for jobs based on the number of hours entered times the loaded cost rate for each employee and anticipated billing amounts from the sales order linked to the job.

Gantt Chart

An improved Gantt chart provides better visibility into project schedules. It is a useful tool for planning and scheduling projects, monitoring a project's progress, and illustrating start and finish dates including summary elements of a project.

Timesheets

Timesheets allow you to enter and submit weekly timesheets, saving you time and effort. And with the timesheet record available to you in the SuiteCloud platform, you can customise your timesheet approval processes to suit your unique business needs.

Mobile Time and Expense

You can also use your iPhone to create and submit time and expense reports after completing a job, directly upload images of receipts, view time entries on a timesheet/week basis, and more.

The screenshot shows the Oracle NetSuite Project Dashboard for a project named 'Company Upgrade'. The dashboard is divided into several sections:

- Project Links:** Includes icons for 'Create Project Task', 'Manage Resources', 'Gantt Chart', 'Enter Time', and 'Enter Expenses'.
- KPI Meter:** A gauge chart showing 'PROJECT % COMPLETE' at 65%.
- Project Info:** Lists project details such as 'PROJECT NAME: Company Upgrade', 'CUSTOMER: Abbott Inc.', 'START DATE: 04/04/2020', and 'CALCULATED END DATE: 05/13/2020'.
- Key Performance Indicators (KPIs):** A table showing project metrics:

INDICATOR	PERIOD	CURRENT	PREVIOUS	CHANGE
Project % Complete	Current	64.50%		
Project Total Hours Worked	This Month vs. Last Month	40	102	↓ 60.8%
Project Incurred Costs	This Month vs. Last Month	\$873	\$5,550	↓ 84.3%
Project Total Amount Invoiced	This Month vs. Last Month	\$16,384	\$0	↑ N/A
- P&L:** A table showing financial performance:

Item Group	Cost	Actual Cost	Committed Cost	Revenue	Actual Revenue	Committed Revenue	Unbilled Receivable	Deferred Revenue	Profit	Margin
Other	300.00	300.00	0.00	384.00	0.00	384.00	0.00	0.00	84.00	21.9%
Expense	533.00	533.00	0.00	0.00	0.00	0.00	0.00	0.00	-533.00	0.0%
Service	7,950.00	7,950.00	0.00	13,300.00	13,300.00	0.00	0.00	2,700.00	5,350.00	40.2%
Total	8,783.00	8,783.00	0.00	13,684.00	13,300.00	384.00	0.00	2,700.00	4,901.00	35.8%
- Gantt Chart:** A visual representation of the project schedule from April 6, 2020, to May 13, 2020. It shows tasks like 'Migration', 'Configuration', 'Testing', 'Documentation', 'Go-live Support', and 'On-site Walk Through' with their respective start and end dates and assigned team members.

View Key Performance Indicators at a glance using Project Dashboard.

Tie Projects to Customers and Bill Directly

Create project jobs and link them to specific customers, even create sub-jobs. When you create project tasks, and enter time against them, percent complete is automatically calculated and rolled up to the job level. Keep track of original and current estimated time to complete each task. Billing time back to customers enables you to enter time spent on a job for customers, and then bill the cost to them.

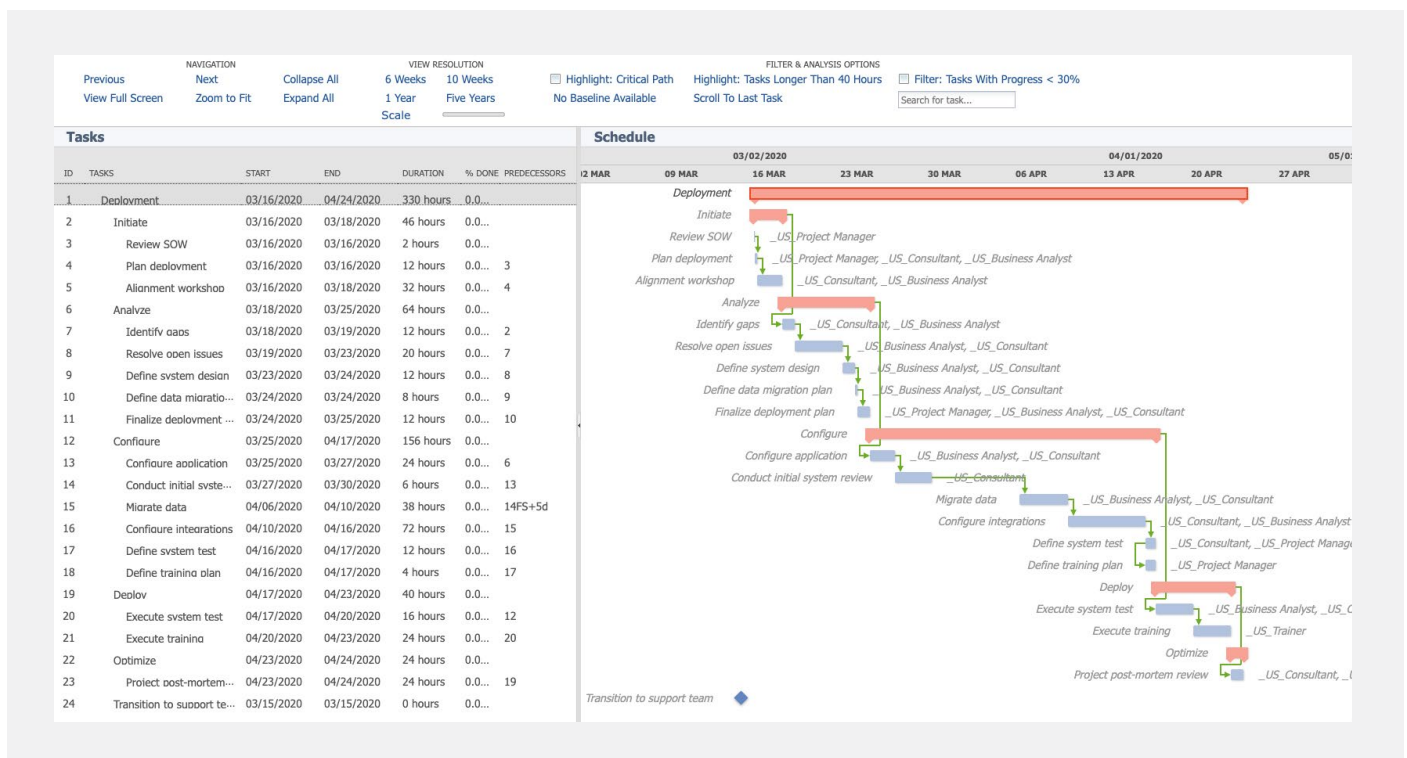
Project Billing

You can bill projects based on completing project work, achieving project milestones, or according to a schedule of dates. The billing schedule type specified

on the project determines the type of project: Time and Materials Billing, Fixed Bid Interval/Milestone Billing Schedules, and Charge-Based Project Billing. Also, billing forecasts can be generated based on the effort planned to be expended across the planned project billing interval to determine when you expect customers to be billed.

Broaden Project Visibility, Measure Performance

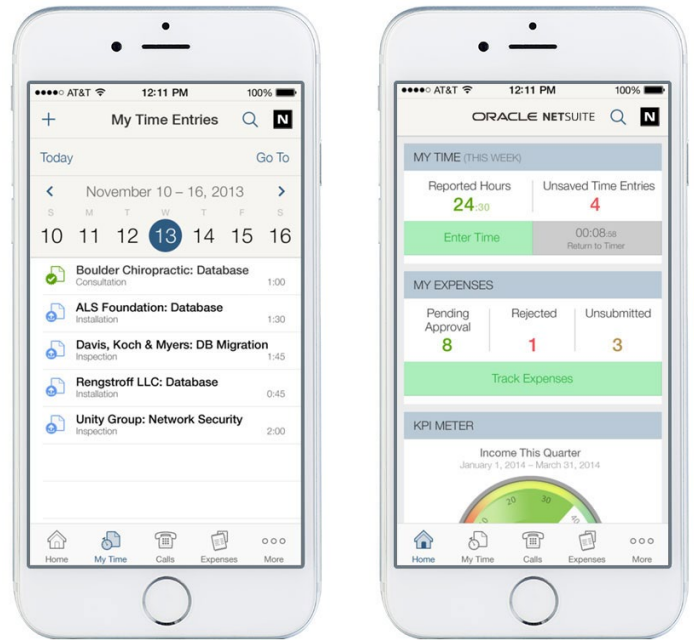
All project job records include start dates, estimated end dates, percentage of work completed, actual end dates, as well as all income and expenses associated with each project. You can view time budgeted versus time spent as well as team utilisation.



Get better visibility and better project monitoring capabilities with fully redone Gantt Chart.

Project Tracking Reports

- Employee Utilisation – Track employee utilisation rates on a per-employee and rolled-up, team basis using this report. You can also compare utilisation for two time periods at once—for example, view ‘current month to date’ utilisation and ‘current year to date’ utilisation side by side.
- Current Backlog – Get a quick overview of work remaining on your open jobs—the number of jobs assigned to each service rep and the number of hours left to complete their job-related tasks.
- Customer/Project Profitability – Review the profitability of your projects based on actual posting revenue and expense transactions.



Stay current anytime, anywhere with purpose-built mobile apps including easy time capture and expense receipts with picture attachments.

To find out more, contact NetSuite on
Infoapac_WW@oracle.com

Australia
Phone: 1800 638 784
www.netsuite.com.au

Singapore
Phone: +65 6263 1300
www.netsuite.com.sg

Hong Kong
Phone: +852 3655 1949
www.netsuite.com.hk

China
Phone: 400 610 6668
www.netsuite.cn

Japan
Phone: 03 6834 4888
www.netsuite.co.jp

Philippines
Phone: +632 8295 9022

India
Phone: +9180 4029 8789
Phone: +9180 4029 8809
www.netsuite.com/in

